

AntMiner FAQ

Q: How to reset antMiner to the default state?

A: S2 is the reset button in the second version of control board, but there is no reset button in the first version of control board. If AntMiner has to be reset, please follow these steps.

Step 1: Set your PC's IP address as 192.168.2.x or 192.168.1.x, and then connect AntMiner with your PC via a network cable.

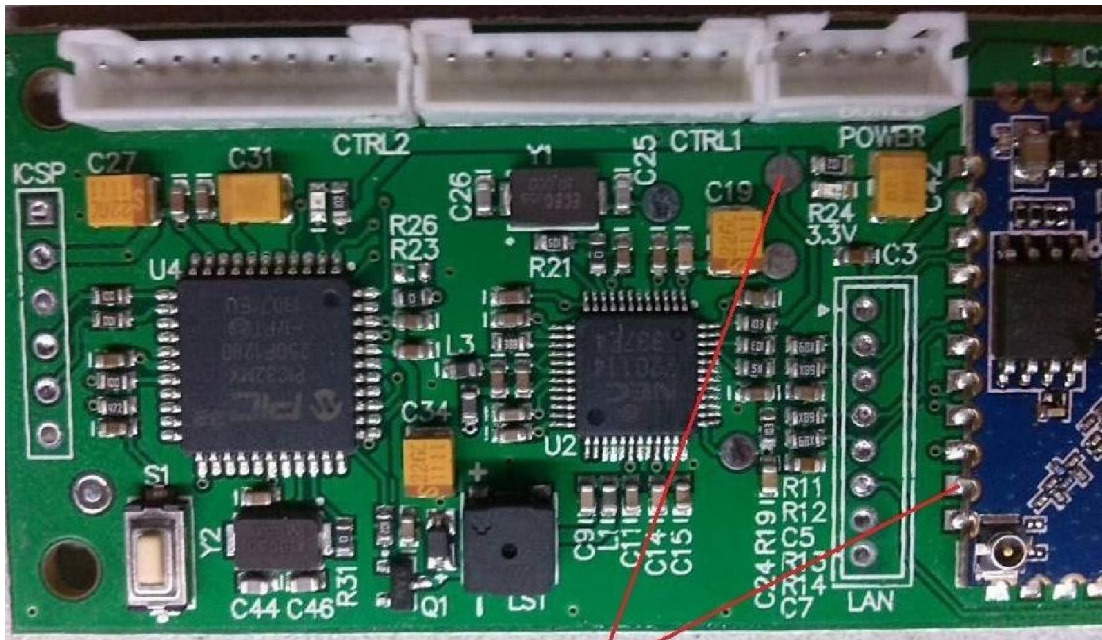
Step2: Power on AntMiner for a while when it is in the normal state. The WAN LED should be light.

Step3: For the second version of control board, please press button S2 for more than 3 seconds. For the first version of control board, please short the RESET PIN to 3.3V as the following picture for more than 3 seconds.

Step4: Re-power antMiner. Ping 192.168.2.99 or 192.168.1.99. Note: from the version 20131212 of openwrt, the default IP is 192.168.1.99



Figure 1 Second batch of control board

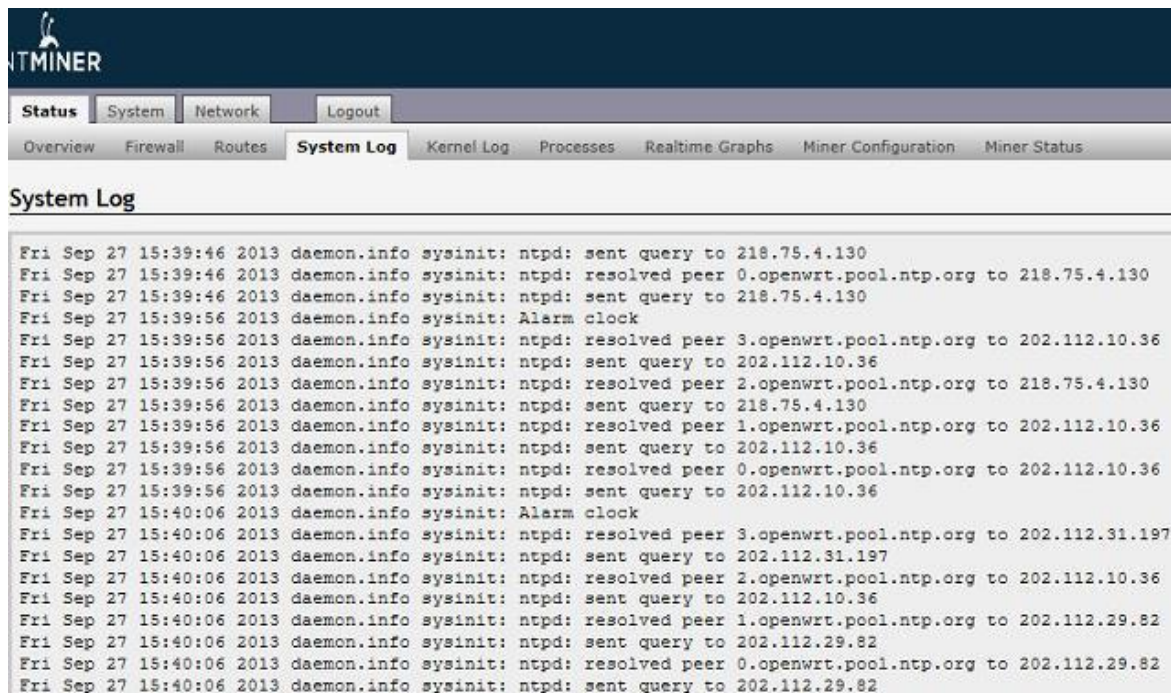


Please short these two points

Figure 2 First batch of control board

Q: How to fix Network Time Protocol daemon (NTPD) Error?

Error: In some special network environment, NTPD server can't be accessed and it is failed to start cgminer. More information can be found at "Status -> System Log" tab.

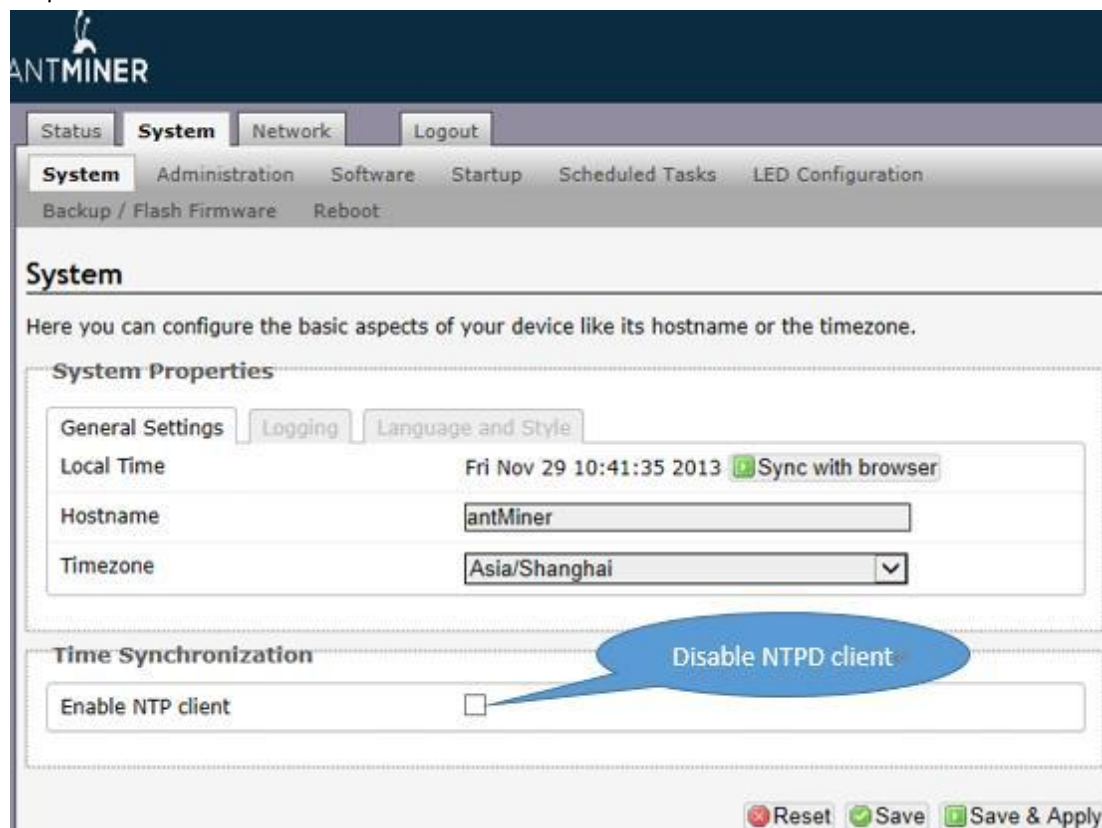


A:

Step1: Modify /etc/init.d/cgminer as following to disable the NTPD detect for cgminer

```
# if [ ! -f /tmp/cgminer-ntpd-done ]; then
#     while [ "$NTPD_RET" != "0" ]; do
#         ntpd -d -n -q -N \
#             -p 0.openwrt.pool.ntp.org \
#             -p 1.openwrt.pool.ntp.org \
#             -p 2.openwrt.pool.ntp.org \
#             -p 3.openwrt.pool.ntp.org
#
#         NTPD_RET=$?
#     done
#     touch /tmp/cgminer-ntpd-done
# fi
echo $PARAMS
```

Step2: Disable NTPD client for linux.



Step3: Re-power AntMiner.